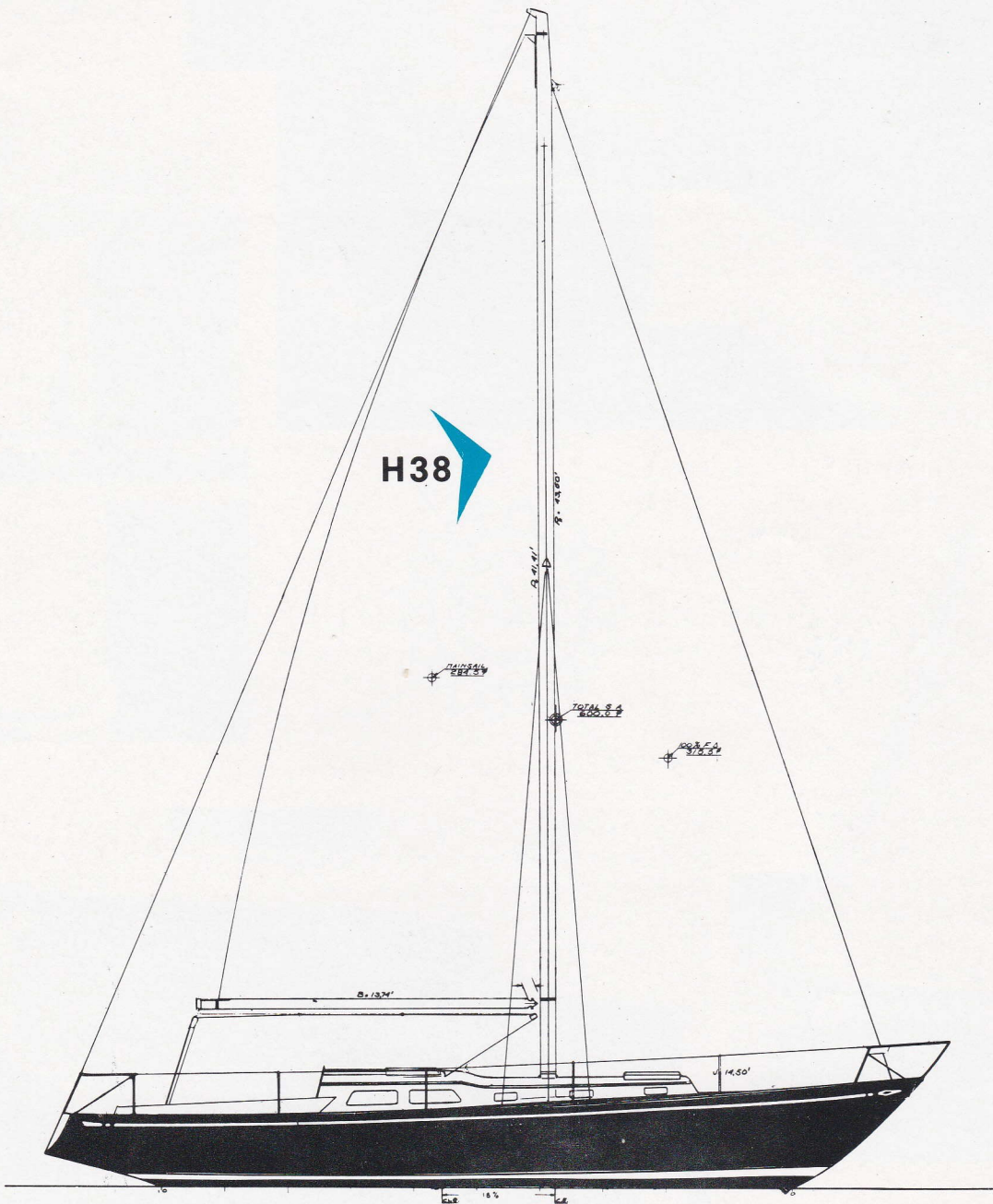


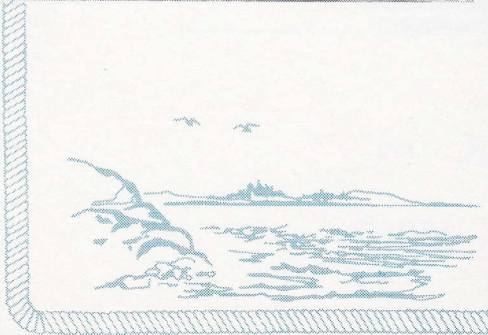
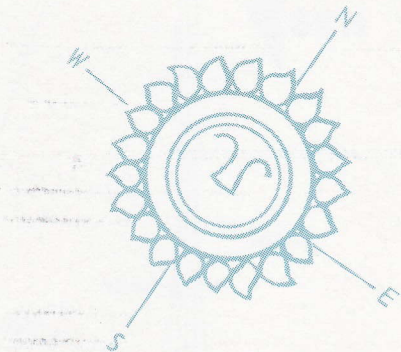
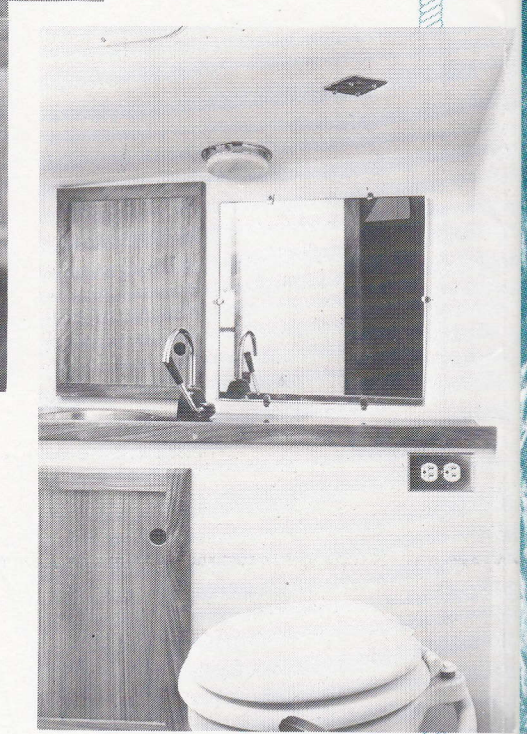
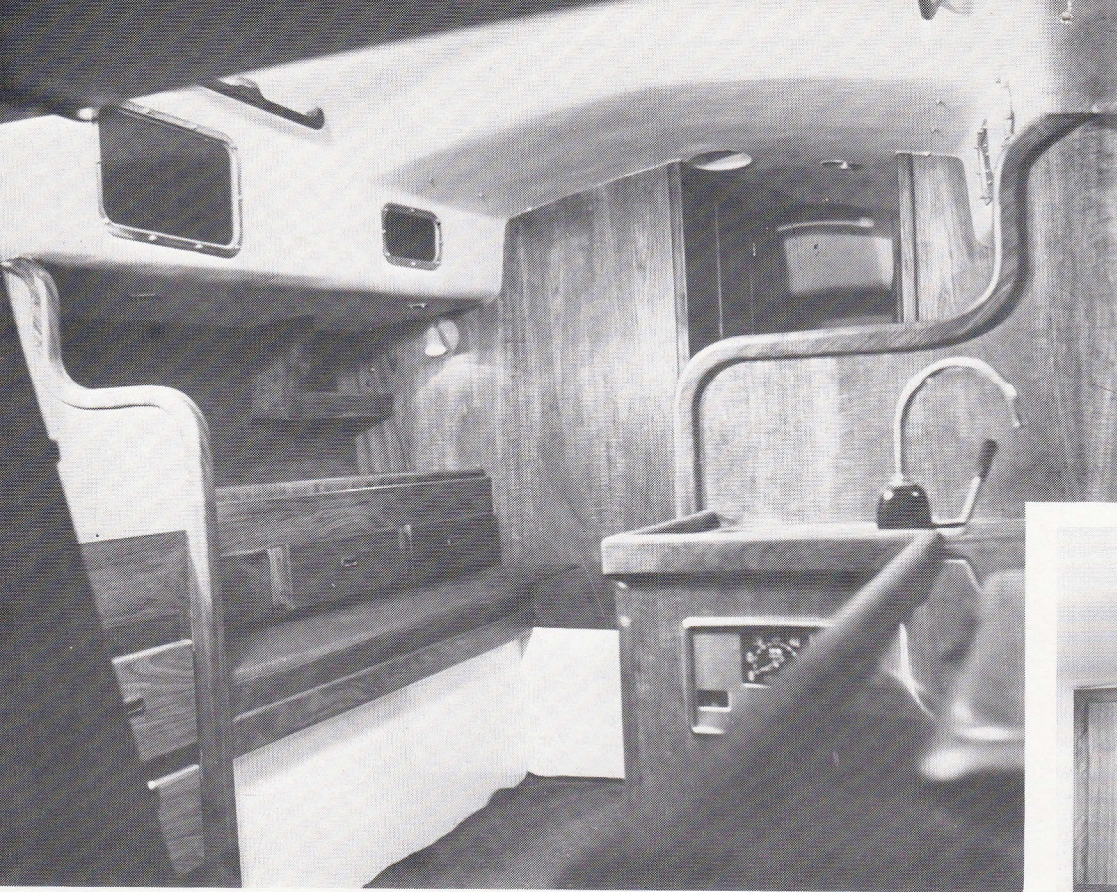
THE HUGHES '38'

OCEAN RACING AUXILIARY

DESIGNED BY SPARKMAN AND STEPHENS INC.



INTERNATIONAL SAILS, INC.
1423 Pine Grove Ave.
985-5166 Port Huron, Mich. 48060



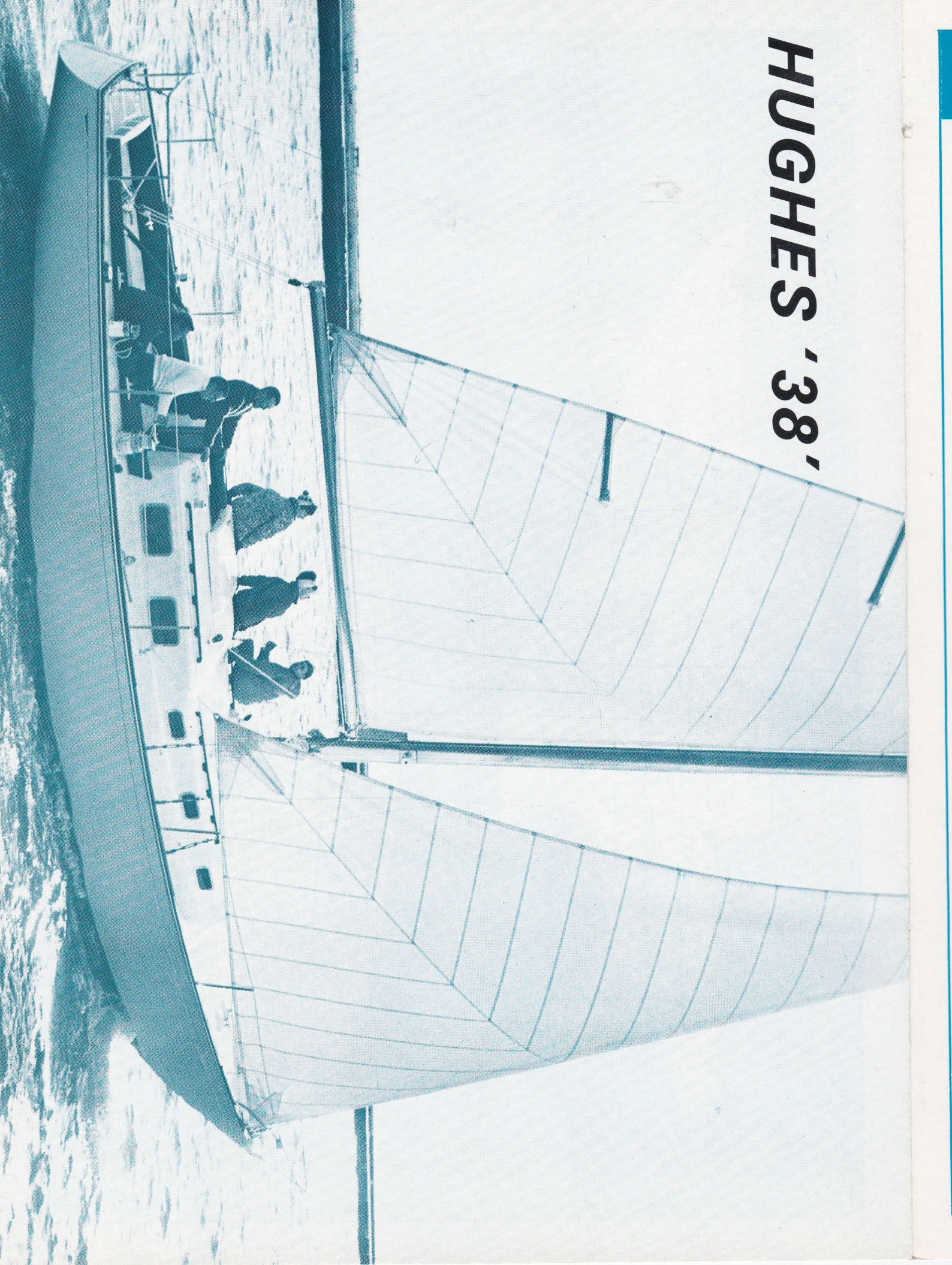
DESIGN

Our design requirements for the HUGHES 38 were for a boat capable of competing in the off shore racing events, providing comfortable accommodation for a crew of seven on the long distance events and suitable for quantity production in fiberglass. The design by Olin Stephens incorporates many of the features developed on the successful One Ton Cup and 12 Meter Boats designed in recent years by Sparkman and Stephens Incorporated. She has a light displacement, long waterline, low wetted surface hull, a high ballast to displacement, ratio and an extremely efficient powerful high aspect ratio sail-plan. The boat was designed to go fast without compromise to the requirements of a low CCA rating.

With a rating of approximately 33 she will have to sail boat for boat with most 40' to 45' boats but will have no difficulty sailing to her high rating. A boat designed to go fast will have a high rating, but experience in recent years indicates that the fast high rating boats generally win. The weight is all concentrated mid ships with the motor mounted low beneath the cabin sole and both fuel and water tanks in the middle of the boat. Particular attention was given to the deck fittings to ensure a minimum of weight on deck with the result that every fitting on deck is custom made in a magnesium alloy which is strong, light and completely corrosion resistant.



HUGHES '38'



HUGHES '38'

CONSTRUCTION

HULL

One piece fiberglass molding. Gold cove stripe. Choice of colours for hull, boot top and anti-fouling bottom paint.

DECK

One piece fiberglass with sandwich core.

DECK HEADLINER

Male molded fiberglass with white glossy gelcoat interior finish.

RUDDER

Molded fiberglass with bronze shaft. Self lubricating bearings.

KEEL

6,000 lbs. external lead cast in water cooled metal molds 10 - 1" diameter bronze keel bolts.

DECK FITTINGS

Custom designed and built in a magnesium alloy. Light weight. Highly polished, corrosion resistant.

WINCHES

Barrient or Barlow 2 - #22 sheet winches 2 - #10 Hallyard winches, 1 - #10 mainsheet winch.

STANDING RIGGING

1 x 19 Stainless Steel standing rigging with swaged ends. Chrome plated bronze turnbuckles with toggles. Stainless steel chainplates.

RUNNING RIGGING

Internal or external hallyards with dacron tails. Dacron sheets.

TANKS

Water 80 gallons. Fuel 25 gallons.

ENGINE

Universal Atomic Four gasoline with direct drive and 35 amp alternator. Rubber mounted stainless steel drive shaft. 12 x 6 narrow sailing propellor. Volvo diesel power optional extra.

ELECTRICAL

2 separate 12 volt batteries charged separately from the engine alternator through master selector switch. Seven interior lights. International navigation lights. Mast head and anchor lights. All circuits are fused and have separate toggle switches.

GROUNDING

All standing rigging and spars are grounded to the lead keel bolts with copper straps.

SPARS

Extruded 6061 T6 aluminum tapered mast with stainless steel track, tangs and fittings. 5" diameter aluminum boom fitted with Nicro Roller Reefing gear and remote screw outhaul operated from the gooseneck.

GALLEY

Top loading foam insulated fiberglass ice box. Stainless steel sink with pump. Two burner Gimballed pressure alcohol stove.

HEAD

Fully enclosed * Washbasin with pump * Vanity counter with storage cupboards above and below * Marine toilet * Molded shower pan with teakwood grating *

CONTROLS

Cockpit mounted "Morse" throttle and clutch controls. 5 unit instrument panel in recessed opening with plexiglass cover.

Additional Standard Equipment

4" thick polyfoam bunk cushions with polyester upholstery fabric * Wide choice of standard colours * Complete waterproof marine carpeting throughout cabin * Interior and exterior joinerwork teak * 'Henderson' bilge pump * Electric fuel gauge * Stainless steel pulpits and lifelines * Roller bearing mainsheet traveller * 2 P.V.C. cowl vents on dorade boxes * 2 Fire extinguishers *

HUGHES BOAT WORKS LTD.

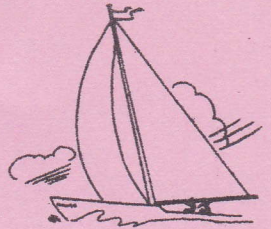
CENTRALIA, ONTARIO

INTERNATIONAL SAILS

OF

PORT HURON

Racing - Cruising Sailboats Exclusively



1423 PINE GROVE
PORT HURON, MICHIGAN 48060

N SHOFFNER
85-5166

B SCHULTHEISS
84-1597

VE CARROLL
85-9669

HUGHES 38

Standard Boat Includes:

Universal Atomic 4 Engine	Navigators table w/drawers
Deluxe instrument panel	SS Bow pulpits
Engine Exhaust blower	SS Stern pulpits
Morse throttle and clutch	SS life lines
4 way safety switch	SS stanchions w/bales
25 gal fuel tank	Geared roller reefing
80 gal water tank	Barlow #17 jib hlyd winch
Extra battery	Barlow #17 mainsheet winch
Barlow reel main hlyd winch	Exterior and interior teak trim
Two Barlow #24 sheet winches	Two 2" Dorade vents
Genoa gear complete	Gimballed two burner stove
Chrome and alum hdwre	Teak handrails in cabin
Teak folding table	Seven interior lights
Mast head and anchor light	International nav. lights
Seaboard roller bearing traveler	Henderson bilge pump
Waterproof marine carpeting	2 fire extinguishers
Internal halyards	Rigging and spar grounded
Geared Micro outhaul	2 Micro twin cheek blocks

Price \$27,800.00 FOB Centralia

SAILS

Mainsail w/zipper	8 oz.	\$471.00
Storm jib	8 oz.	288.00
Working jib	8 oz.	412.00
125% Genoa	8 oz.	498.00
140% Genoa	6.5 oz.	535.00
150% Genoa	5 oz.	554.00
150% Genoa	6.5 oz.	598.00
165% Genoa	4 oz.	582.00
165% Genoa	5.75 oz.	632.00
Spin. staysail short	1.2 oz	195.00
Spin. staysail tall	2 oz.	293.00
Spinnaker	1.2 oz.	487.00
Spinnaker	.75 oz.	510.00
Spinnaker	.5 oz.	530.00
Mainsail cover	Acrilan	60.00

"The Sailing Guys"

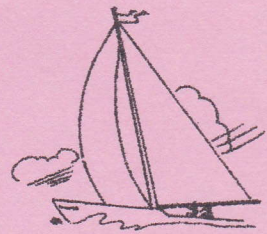
INTERNATIONAL SAILS

OF

PORT HURON

Racing - Cruising Sailboats Exclusively

HUGHES 38



1423 PINE GROVE
PORT HURON, MICHIGAN 48060

ON SHOFFNER
985-5166

OB SCHULTHEISS
984-1597

AVE CARROLL
985-9669

OPTIONAL EQUIPMENT:

Trim tab with triple wheel.....	\$2,250.00
Pedestal steering without trim tab.....	1,250.00
Pair of Barient mounted on bases.....	1,250.00
Spinnaker gear.....	400.00
Barlow #17 spinnaker halyard winch	125.00
Spreader lights.....	65.00
Cockpit cushions(pair).....	70.00
Cradle.....	200.00
110 Volt shore power-4 outlets.....	60.00
Colored hull.....	75.00
Colored deck.....	50.00
Hotwater heater(shore or under power).....	300.00
Aries bulkhead lighted compass.....	285.00
Pressure water system.....	175.00
Shower with electric bilge pump.....	100.00
Seafarer depthsounder.....	200.00
Triad speedometer TRIMSPEED II.....	175.00
Danforth White Wind Guide.....	351.00
Danforth White Wind Speed Indicator.....	236.00
Danforth White Speedometer.....	405.00
Danforth White Constellation Compass.....	225.00
Insulated Backstay.....	75.00
Shipmate two burner range w/oven in lieu of regular stove.....	250.00
Set of double lifelines.....	75.00
Volvo MD2 diesel in lieu of Atomic 4.....	1050.00
Electric bilge pump.....	40.00
Martec folding propeller.....	125.00
Set of bunkboards(4).....	150.00
Bottom paint(Vinylast).....	100.00
Balsa Core Hull.....	700.00
Vinyl Core Hull.....	700.00

Note: We can quote on any other equipment desired.